



*Hazel Atkins*



*Carolyn Babcock*



*Lilburn Bingman*



*Eloise Brown*



*Mildred Clark*



*Kingsley Clark*



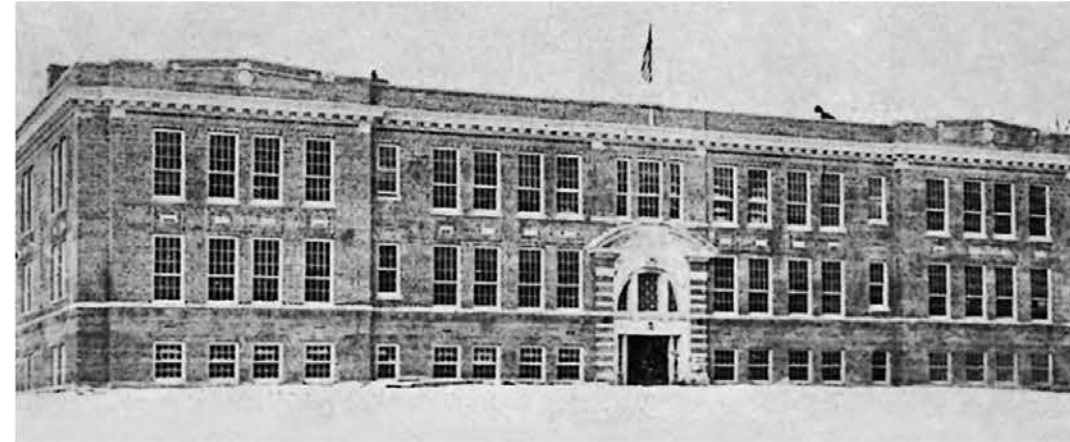
*Marguerite Forester*



*Harold Glenn*



*Frank B Lindeman*  
*Superintendent*



*C. J. Madden*  
*Principal*



*Leo Harsh*



*Loren Harsh*



*John Hoffman*

# *Adel High School - Class of 1931*



*Alvoretta Hunt*



*Virgil Hunter*



*Marie Mann*



*Freida McMullin*



*Merle Messamer*



*Anna Michener*



*Blanche Myers*



*Earl Nelson*



*Katherine Reeves*



*Christine Russell*



*Russell Stayner*



*Robert Swartz*



*Ralph Valentine*



*Leighton White*



*Viola Wicks*



*Jane Wilson*



*Wanda Wilson*



*Norma Wright*

*Not Pictured -  
Maude Jackson*