



*Vivian
Batten*



*Pearl
Beane*



*John
Celley*



*Frank B Lindeman
Superintendent*



*Leona
Coffin*



*Nellie
Cornelison*



*Omar
Cripe*



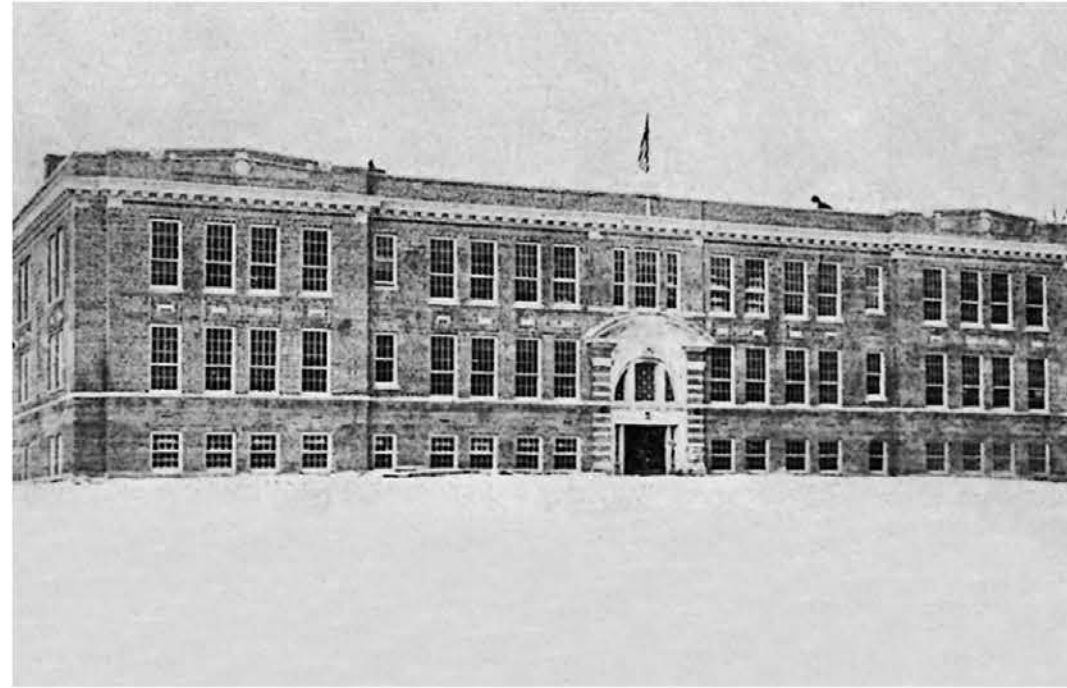
*Thelma
Curry*



*Gertrude
Dawes*



*Lois
Harmon*



*Irwin
Hathaway*



*Annetta
King*



*Donald
Luther*



*Maggie
Marker*



*Glen Gertrude
Maxon*



*Ethel
McGriff*

Adel High School - Class of 1919



*Omar
McMahon*



*Veda
Reeves*



*Bessie
Reiste*



*William
Roland*



*Buelah
Spurgeon*



*Ruth
Stevens*



*Rose
Storm*



*Williard
Stout*



*Ernest
Sutherland*



*Vera
Van Fossen*