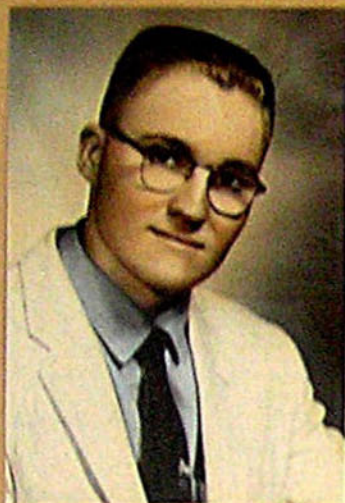




*Karen McDonald, Treas.*



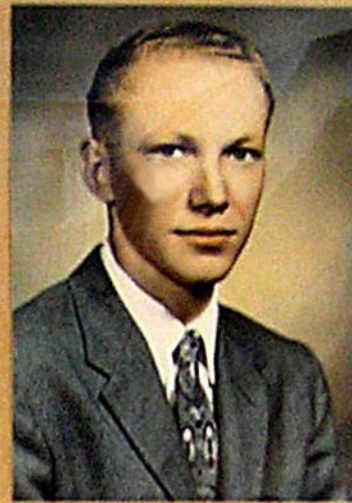
*Rex C. Burgett, Pres.*



*Erwin W. Opperman, Prin.*



*Duane E. Little, Supt.*



*Frank A. McDonald, V. Pres.*



*Emma Binns, Secy.*

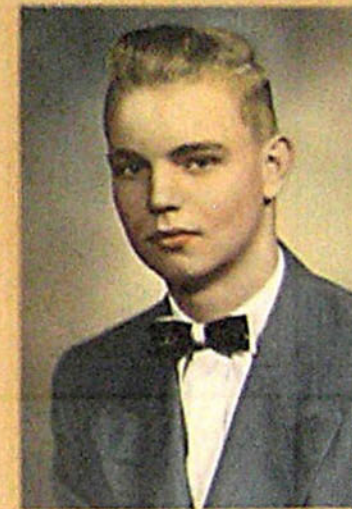


*Belva Kinnison*

# De Soto High School

## Class - 1957

*Sarwin Studio*



*Ronald L. Stonehocker*



*Virginia Eakle*



*Marvin Hildebaugh*



*Carol Brittain*



*Yvonne Marquardt*



*Larry Ory*